

G2 REAL-TIME RULE ENGINE

G2 FOR BUSINESS-CRITICAL APPLICATIONS

From the control room to board room, Gensym's G2® is the world's leading real-time rule engine platform. G2 solutions automate decisions in the most demanding business-critical applications ranging from designing resilient supply chains for HP to monitoring spacecraft for NASA, to solving problems in Ericsson's mobile telephony networks, to coordinating Toyota's manufacturing, to optimizing energy at Dow Chemical, to Wall Street trading, to scheduling the Panama Canal, to processing complex billing, to military command and control, and much more.

REAL-TIME REASONING

G2 uniquely empowers staff as they reason and reach conclusions about business-critical operations in real time. G2 unifies reasoning technologies, including rules, procedures, object-oriented modeling, simulation, and graphics, in a single development and deployment environment. These technologies enable users to: increase business knowledge and understanding for better designs, policies, and practices; predict problems and respond effectively to improve business availability; and automate actions to achieve greater business performance.

BOOST DEVELOPER PRODUCTIVITY

G2's highly interactive and visual development environment boosts productivity and cuts project risks versus traditional programming by speeding prototyping, development, and online deployment. Its generic real-time rules and procedures work across object classes to further cut development effort. G2 is a powerful platform for original equipment manufacturers (OEMs), value-added resellers (VARs), system integrators (SIs), consultants, and end users. Using G2, organizations:

- Rapidly prototype solutions with end users
- Achieve faster time-to-completion of projects
- Work with smaller development teams
- Lower software-maintenance costs
- More easily integrate with enterprise systems, applications, and databases
- Quickly port across Windows, UNIX, and Linux systems

COMPETITIVE EDGE

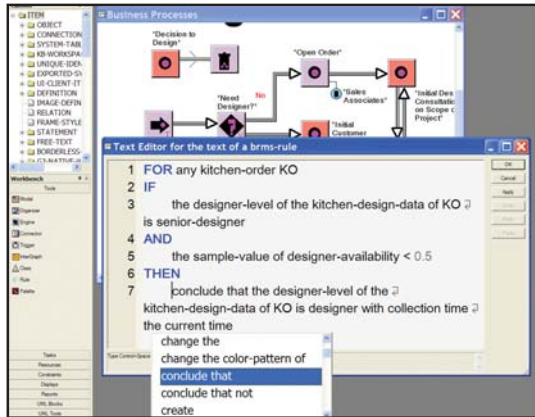
G2 sharpens competitiveness by:

- Increasing business agility and performance
- Improving asset and service availability
- Better managing complex, time-critical operations
- Rapidly building and deploying business-critical applications
- Preserving, enhancing and leveraging operations knowledge

G2 advantages:

- Real-time reasoning for time-critical decisions
- Mission-critical reliability
- Object modeling for understandability and reusability
- Rapid prototyping to involve end users
- Updating in run mode to immediately adapt logic
- Unified modeling, simulation, and deployment platform for greater productivity





With G2's visual environment, structured natural language and interactive editor, non-programming end users read, understand, and modify application logic.

FLEXIBLE PLATFORM

G2 combines development and deployment in a single platform. It includes a UI client for multi-user access and drivers for ActiveX, Java, Web connectivity, enterprise systems, networks, databases, and automation systems. G2 is portable across Windows, UNIX, and Linux systems and supports major international languages.

ABOUT GENSYM

Gensym Corporation is a leading provider of rule engine software and services for mission-critical solutions that automate decisions in real time. Gensym's flagship G2 software applies real-time rule technology for decisions that optimize operations and that detect, diagnose, and resolve costly problems. With G2, the world's largest organizations in manufacturing, utilities, communications, transportation, aerospace, finance and government maximize the agility of their business and achieve greater levels of performance.

Major users include ABB, Alcan, BP, Dow Chemical, DuPont, El Paso Energy, Eli Lilly, Ericsson, ExxonMobil, Ford, Hitachi, HP, JEA, Lafarge, Motorola, Nokia, Panama Canal, Siemens, Tokyo Electric and Power, Toyota, the U.S. government and many others.

Gensym and its numerous partners deliver a range of services throughout the world, including training, software support, application consulting, and complete solutions.

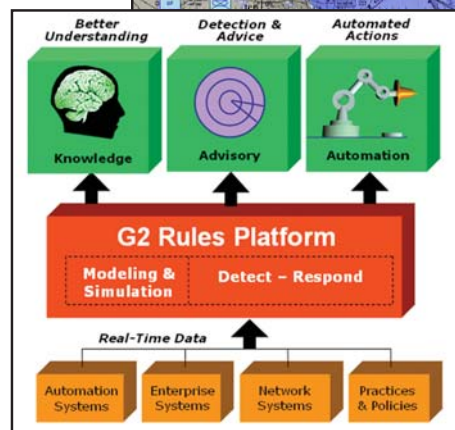
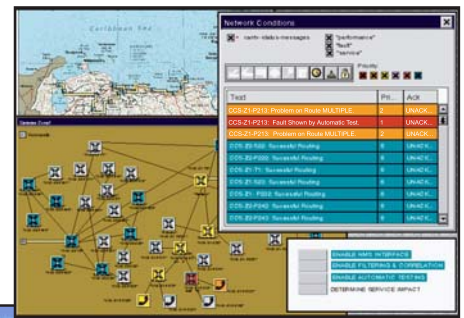
For more information, visit Gensym at www.gensym.com, or call 1-800-896-3030 (U.S. and Canada) or +1-781-265-7100 (worldwide).

REAL-TIME EXECUTION

G2 reasons in real time for better decisions and responses. G2 concurrently processes thousands of rules and procedures per second and maintains data and event histories for reasoning over time. G2's proven architecture enables mission-critical applications that are far more robust than those built with traditional programming tools.

DYNAMIC SIMULATION

With G2, developers dynamically model, simulate, and visualize systems to quickly design and test prototypes and develop complete solutions. Models and simulations test application logic throughout the development cycle, monitor actual-to-ideal process performance, and enable what-if analyses for design of business configurations, policies, and practices.



Gensym's G2 rule engine platform improves decisions by enabling better understanding of business-critical processes, delivering expert advice in real time, and taking automated actions.